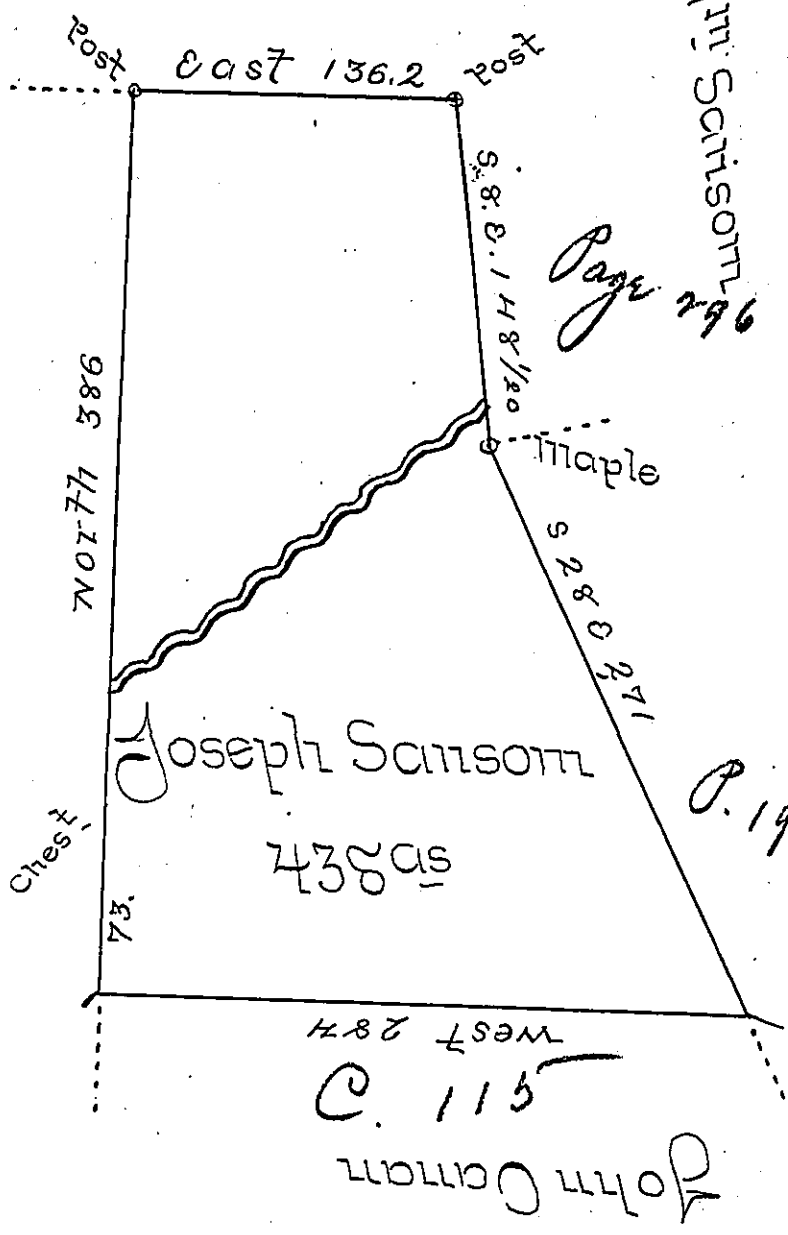


C-533

William Montgomery



Wm Sanson

Geo. Staff

Situate on a main Branch of the Beaver Dam Branch of Mushannon Creek two or three Miles south West of the Big Beaver Dams in Frankstown Township Huntingdon County Containing 438 acres & the usual allowance of six Percent for Roads Surveyed the 7th day of June 1793 in pursuance of a Warrant dated the 21st day of December 1792 =

Daniel Broadhead Esq: Secy.

John Canan U.S.

IN TESTIMONY that the above is a copy of the original remaining on file in the Department of Internal Affairs of Pennsylvania, made conformably to an Act of Assembly approved the 16th day of February, 1833, I have hereunto set my Hand and caused the Seal of said Department to be affixed at Harrisburg, this sixth day of March 1900.

James W. Latta
Secretary of Internal Affairs.